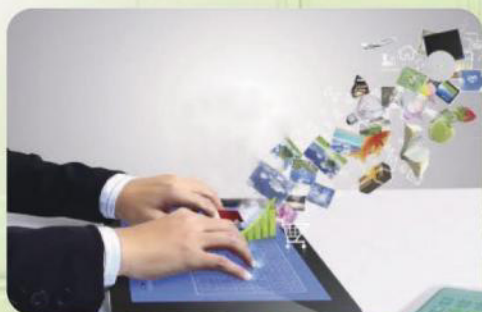


DBS Plus

Digital Broadcast Teaching System



DBS Plus, an innovative audio visual teaching system, engages teachers and students in a joyful and interactive learning environment. Offers tools such as **wifi-display (smart phone, tablet), dialogue, group practice, students demonstration, on-line test, prompt feedback, grade, help, roll call...**, etc that will keep students motivated and excited while they acquire the language skills even under non-PC based classrooms. You will not regret to get closer DBS-plus, the latest inspirational and effective pedagogical system.

Features

Wireless Broadcast Multimedia Devices.

With **brand-new touch panel** and **built-in blue tooth**, DBS-plus supports PC, laptop and tablet wireless broadcasting such as I-Phone / I-Pad / Tablet / Smart Phone / NB for teachers to easily present teaching materials with hand-held devices.



Versatile Teaching and Learning

Address the specialized learning environment of language/computer lab by multiple tools such as broadcast, observe, dialogue, group discussion, daren, on line help, etc and delivery high-fidelity sound obtaining a fluent and free discussion.



In-class Evaluation

Teachers can give paper-less exam as power point format by editing single/multiple choice, true and false questions and able to insert texts, video and audio files. Meanwhile, different exam mode such as **Competition, Interactive game, Anonymous Exam** and so on makes the learning more interesting, lively and enjoyable.



Support High Resolution Display

Support high **resolution up to 1920*1080** and sustain full motion guaranteeing excellent image quality for the materials including motion video and high definition graphics.

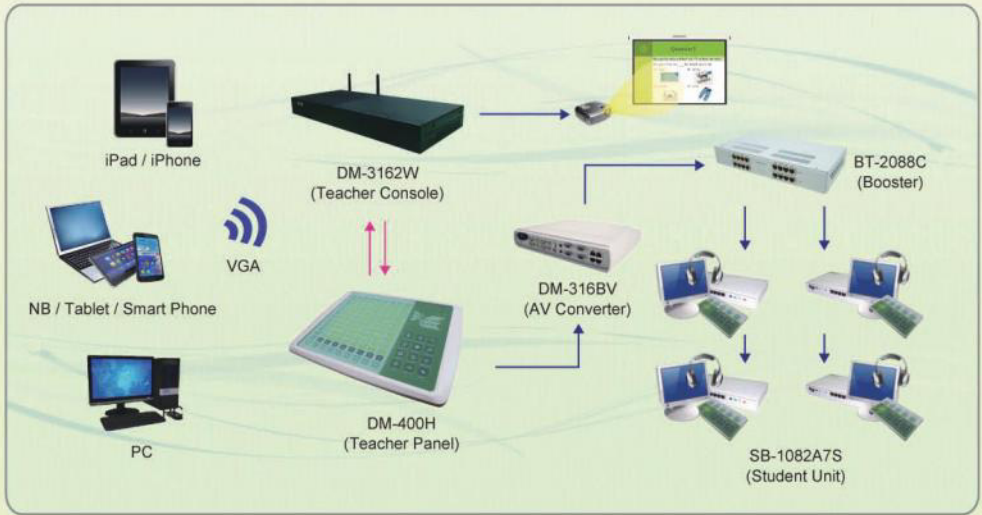


Optional environment control

Enable a total classroom management such as projector, power, I/O relay (lights), curtain, screen control, etc by integrating with an optional device control box (PJ-108) facilitate the teaching and management.



System Structure



Component



DM-400H
Teacher Panel



DM-3162W
Teacher Console



DM-316BV
AV Converter
(Optional)



BT-2088C
Booster



SB-1082A7S
Student Unit

Item	Model No.	Description
Teacher Panel	DM-400H	Touch Panel with multi-function keys
Teacher Console	DM-3162W	Teacher Unit to connect Teacher PC & Wireless Devices
AV Converter	DM-316BV	Expand 4 AV and 2 VGA devices
Booster	BT-2088C	Signal Booster with 8 ports
Student Unit	SB-1082A7S	Student unit to connect headsets, screens, PCs and DRS response keys. One box support two students' PC.
DRS Software	DBS Software	DBS Response System
DRS Key	DB-708	DRS Response Key
KBM Control	KBM	Keyboard and Mouse control
Bus Cable	STP CAT5E	Shielded Twist Pair Category 5E Cable

Function

Item	Function	Description
Interactive Teaching	Multi-media Sources	Support PC, NB, tablet PC and multimedia sources like VCD , DVD player, camera, projector and so on
	Student Demonstration	Appointed student broadcast the audio and video to part/all students.
	Darken	Darken part/all students' screens to make them concentrate on class
	Help	Student can call for help
	Interactive Instruction	Remote control keyboard and mouse of assigned student to reach one by one instruction
	Exclude	Under teacher broadcasting, assigned students ID will be viewed as off-line and able to self control their PC
	Self Study	Student can freely choose the teacher broadcasting screen or self screen
Dialogue Practice	Roll Call	In class roll call
	Dialogue to Single student	The teacher can talk to appointed student
	Dialogue to all	The teacher can dialogue to all students
	Student Dialogue Demonstration	The teacher can broadcast appointed student dialogue to all/part students
	Group Dialogue Demonstration	The teacher can broadcast appointed group dialogue to all students
Evaluation	Group Discussion	The teacher allow certain groups discussion
	In- class Evaluation	In class evaluation to know about student learning condition
	Competition	Students who answer wrong for certain times (teacher can set the value) will fail the game and the last survivor will win.
	Interactive Game	The teacher can play on-line snatch and randomly pick student/ group to answer questions
Data Management	Anonymous Mode	Anonymous Voting
	Question Edit	Easy and fast edit questions on Power Point
	Class Management	Teacher can edit class group and student information on the system
	Answer Collection and Analysis	Automatically collect students' answers and calculate the score
Environment Control (optional)	Import/ export data	Able to import/ export class information and grade report
	Turn off Target PC Remotely	Able to turn off student PC remotely
	Restart Target PC Remotely	Able to restart student PC remotely
	Seat Arrangement	Set student ID according to the seats
	Projector Control	Control projector power switch
	Screen Control	Raise / put down / stop the screen
	Curtain Control	Open/ close curtain
	Power Switch	Devices power switch

